

Executive Program Management

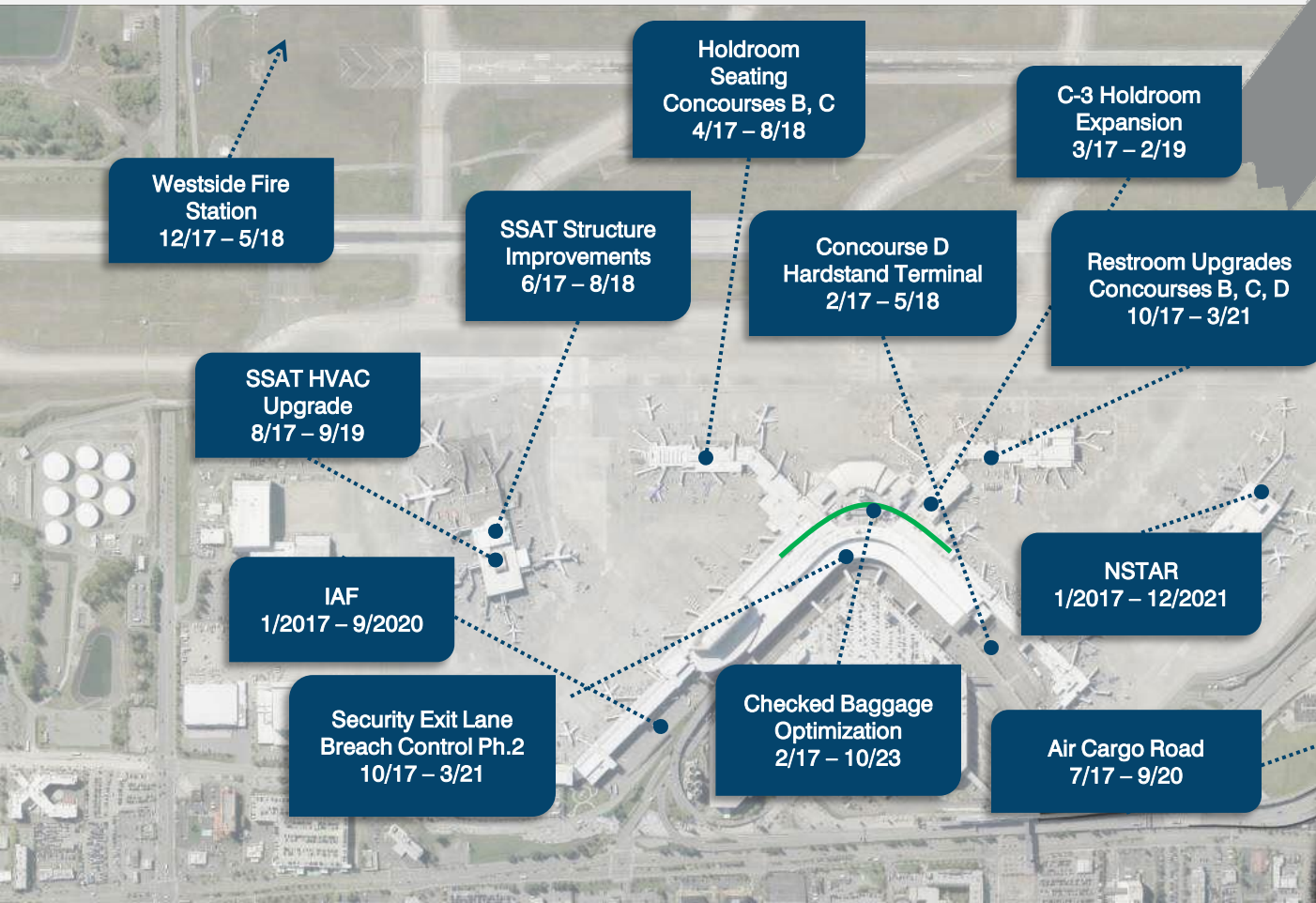


Current and upcoming major development requires integrated management of multiple individual projects -

Program Focus vs Project Focus



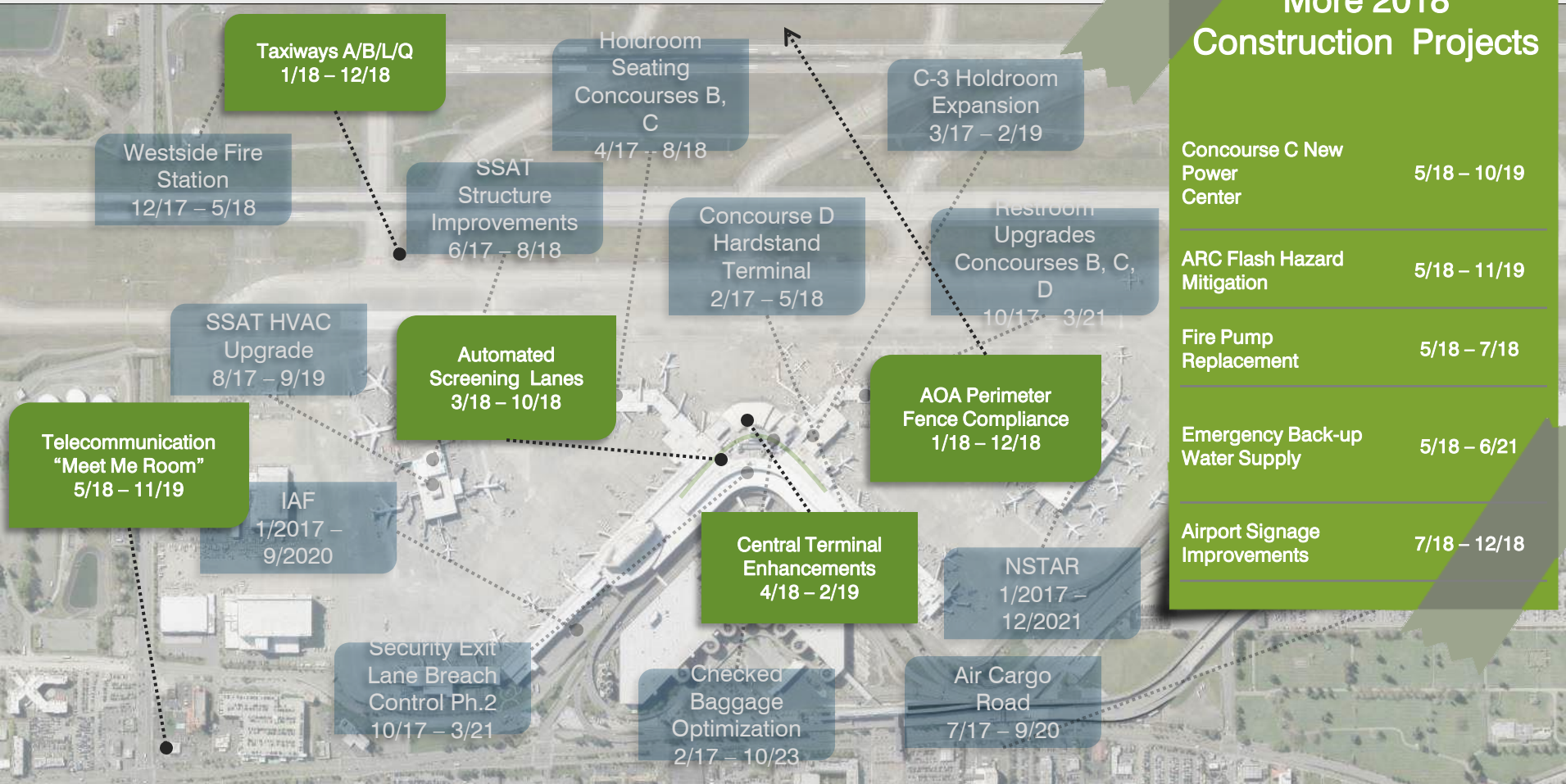
2017 CONSTRUCTION



More 2017 Construction Projects

Stage 3 Mechanical Energy Controls	4/17 - 9/19
GBAS Upgrade	4/17 - 8/18
Water Hammer Attenuation	5/17 - 8/19
VFD Replacement Project	5/17 - 8/19
Electric Utility SCADA	8/17 - 3/19
Video System Improvements	9/17 - 6/19
Ramp WIFI Improvements	9/17 - 6/18
Employee Screening Phase 1	10/17 - 9/18
Emergency Generator Control Replacement	11/17 - 1/19
Trenchless Replacement of Pipe	11/17 - 8/19
IWS Segregation Meters	12/17 - 9/18

2018 CONSTRUCTION



More 2018 Construction Projects

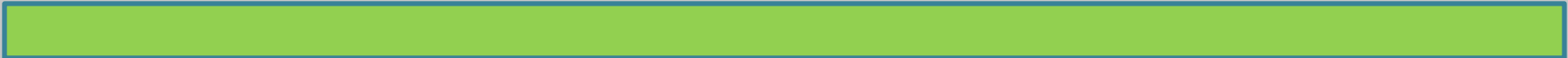
Concourse C New Power Center	5/18 – 10/19
ARC Flash Hazard Mitigation	5/18 – 11/19
Fire Pump Replacement	5/18 – 7/18
Emergency Back-up Water Supply	5/18 – 6/21
Airport Signage Improvements	7/18 – 12/18

Proposed Projects

Advanced Planning

&

On-Call Planning



Legend

- Early Projects
- Planned Projects
- Enabling works

Non-Specific Area SD's:

- SD 3 – Overall Proj. Management Support, Integration, and On-Call assignments
- SD 11 – 2029 Implementation Plan (continually updated drawing set)
- SD 12 – Infrastructure Planning (utilities, grading/drainage, water)
- SD 19 – Implementation Plan Cost Estimate Review

SD 17: Maintenance Building PDD

SD 16: Westside Maintenance Campus

SD 8: Main Terminal Optimization

SD 9: 2nd Terminal Program Development

SD 13: North Airfield Projects

SD 6: North Main Terminal
SD 15: North Main Terminal PDD

SD 14: Conc. A PDD

SD 18: Conc. A Concept Dev.

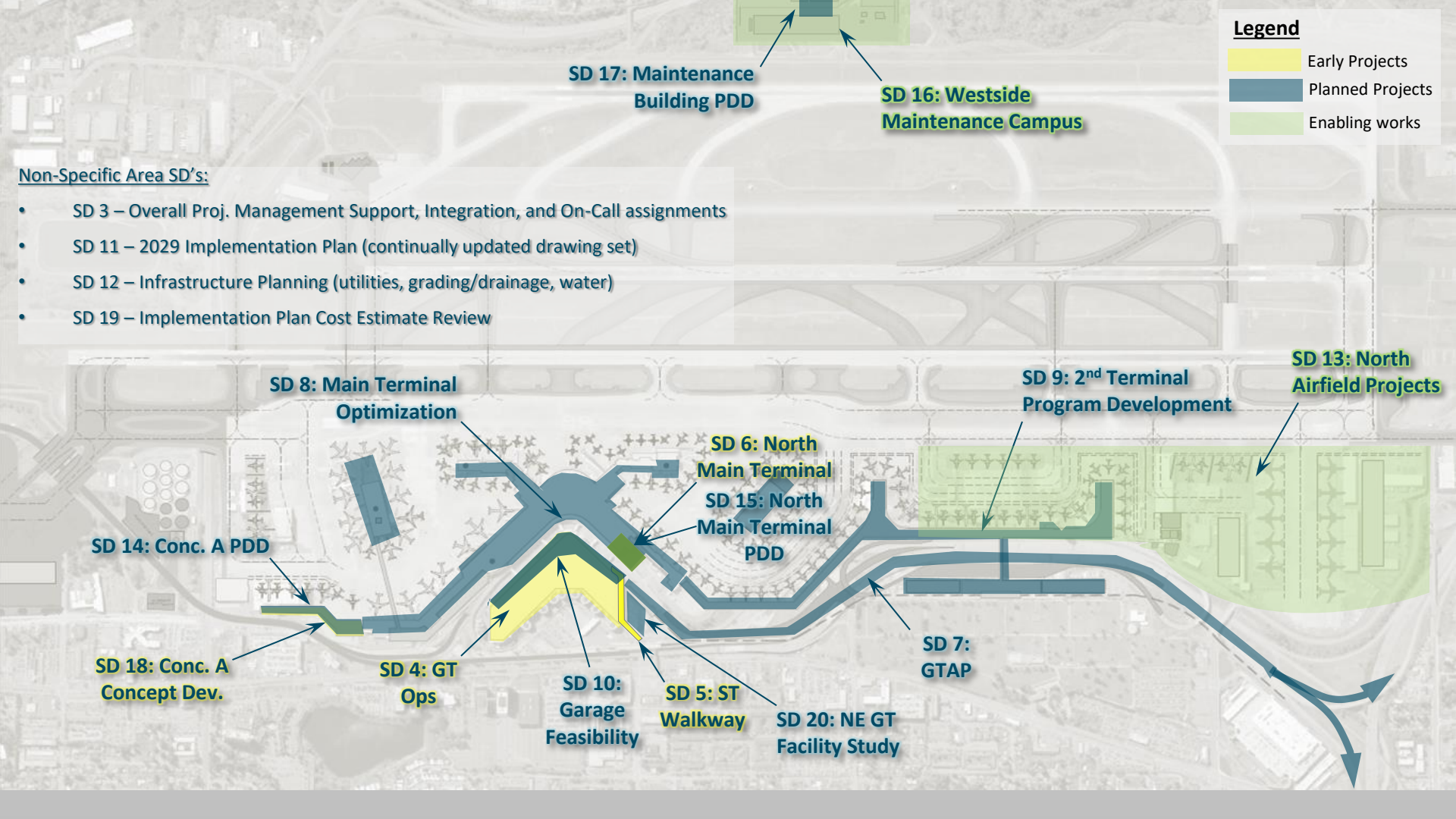
SD 4: GT Ops

SD 10: Garage Feasibility

SD 5: ST Walkway

SD 20: NE GT Facility Study

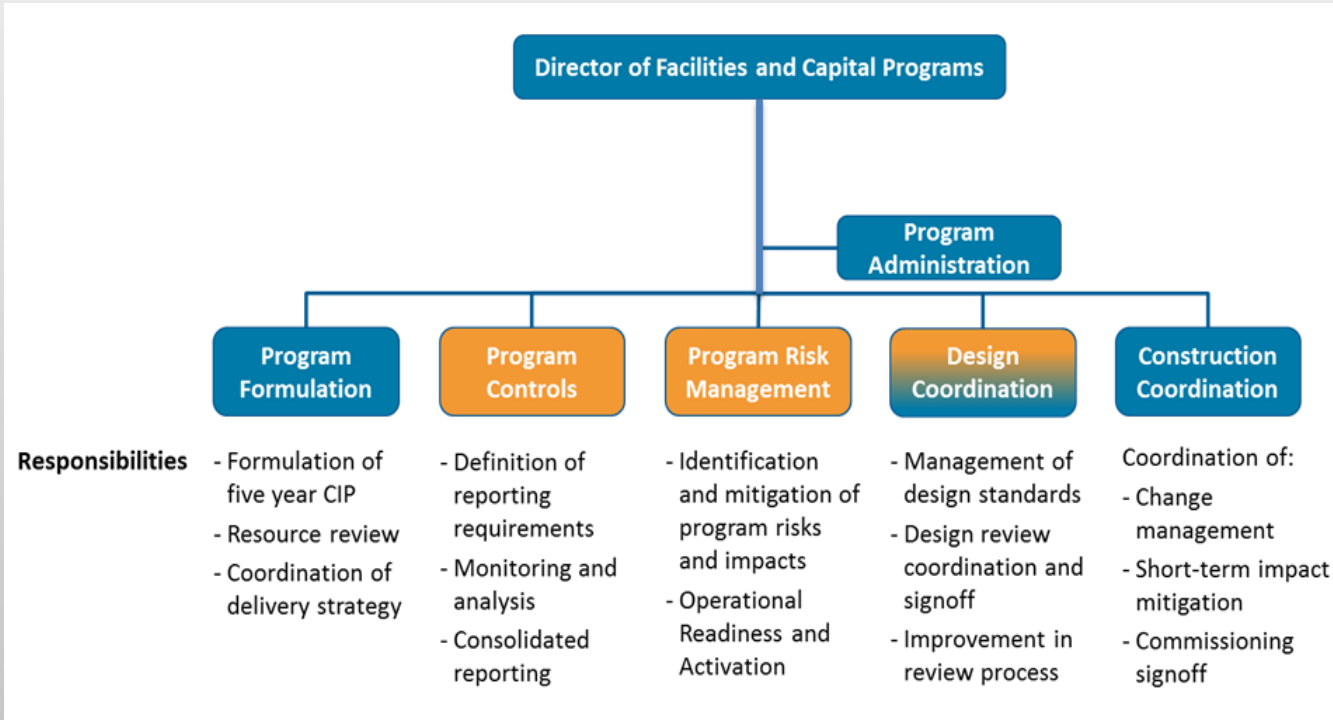
SD 7: GTAP



Key Functional Areas

- Program Formulation – Port Staff
- Program Controls – Consultant
- Program Risk Management – Consultant
- Design Coordination – Consultant
- Construction Coordination – Port Staff

Proposed Org Chart



Port Staff Augmented by Consultants

THANK YOU

Questions?

